

RECEIVED
LARAMIE COUNTY
CHEYENNE, WY.

Southeast corner Section 21 T18N R64W

CERTIFIED LAND CORNER RECORDATION 89 OCT 5 PM 3 00

DESCRIPTION OF CORNER EVIDENCE FOUND, AND ORIGINAL RECORD (If known)

Found no evidence of the original corner or any resurvey. The original BLM notes call for a 20x12x6 sandstone. The corner falls in a steep area with many sandstone in the area. Called the corner lost and reset by double prorate method.

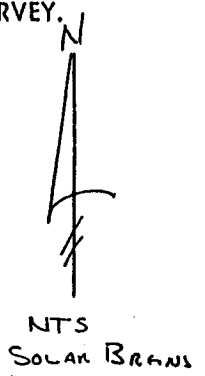
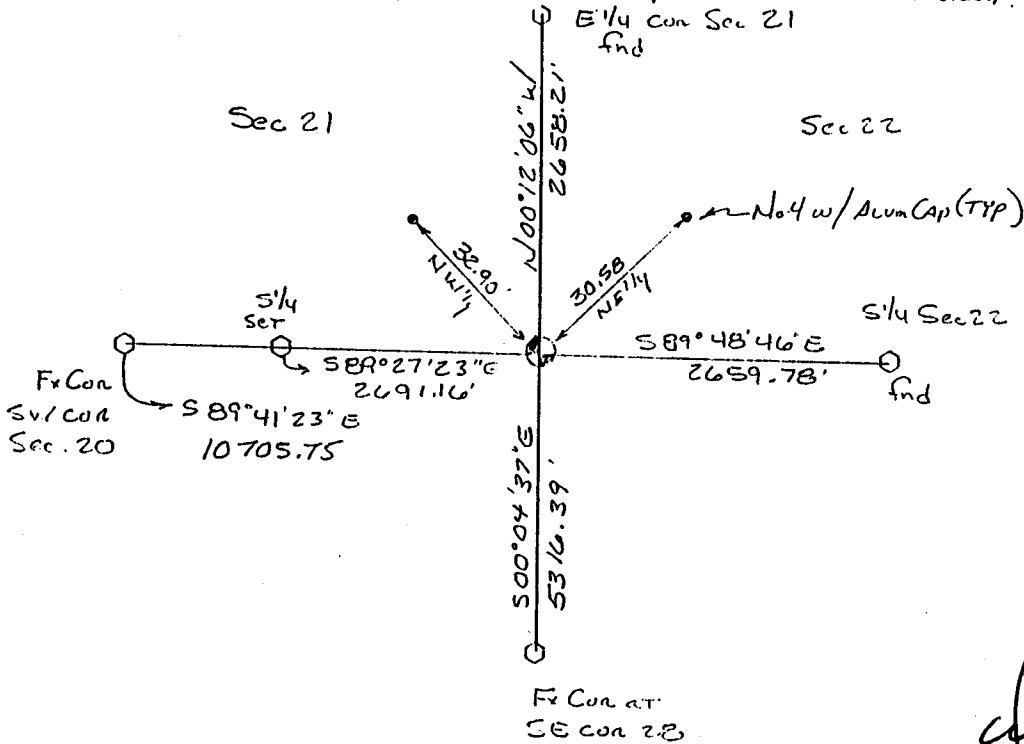
DESCRIPTION OF MONUMENT AND ACCESSORIES ESTABLISHED TO PERPETUATE THE ORIGINAL LOCATION OF THIS CORNER:

Set a No. 5 rebar 30" long with a Corps of Engineers Brass Cap at the double prorate location. Set No4 rebar with 1 1/2" aluminum cap Ref Mon as shown in the sketch below.

AUG 23 1989

SKETCH, WITH COURSE AND DISTANCE TO ADJACENT CORNER IF DETERMINED IN THIS SURVEY.

(May Sketch or Paste Reproduction on Reverse Side.)



I, Wallace C. Muscott certify that I have carefully performed or reviewed the work done on the diagrammed corner as reported on this recordation form and approve the same.

Wallace C. Muscott
Signature of Surveyor

3830
Registration No.

STATE OF WYOMING,
Office of Clerk and Recorder,
County of _____

This "corner record" was filed for record on the _____ day of _____, 19____, was noted on the cross-index plat and is assigned page No. _____, in book No. _____.

Cross Index No.	County Official			
	R 13	T. 18 N	R. 64 W	6th Mer.
_____	_____	_____	_____	_____
_____	_____	_____	_____	_____
_____	_____	_____	_____	_____
_____	_____	_____	_____	_____
_____	_____	_____	_____	_____
_____	_____	_____	_____	_____
_____	_____	_____	_____	_____
_____	_____	_____	_____	_____